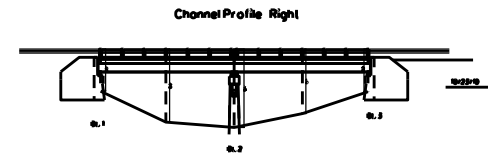
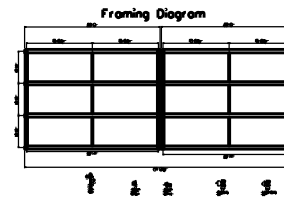
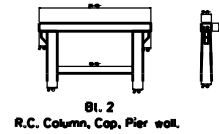
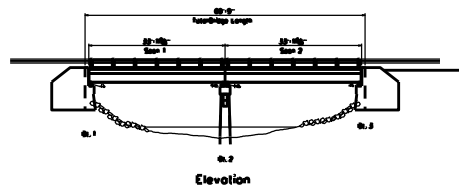
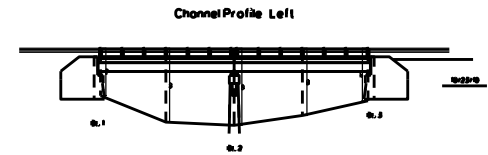
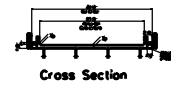
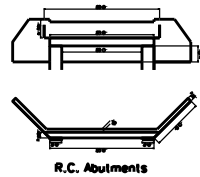
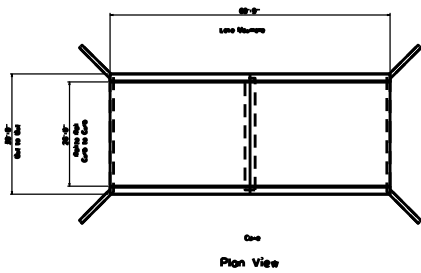


Br. #M0326  
 Rt. St. Hwy 10  
 Sec. 0 7/0 Log 10.81

Log





Log  
→

69'-9"

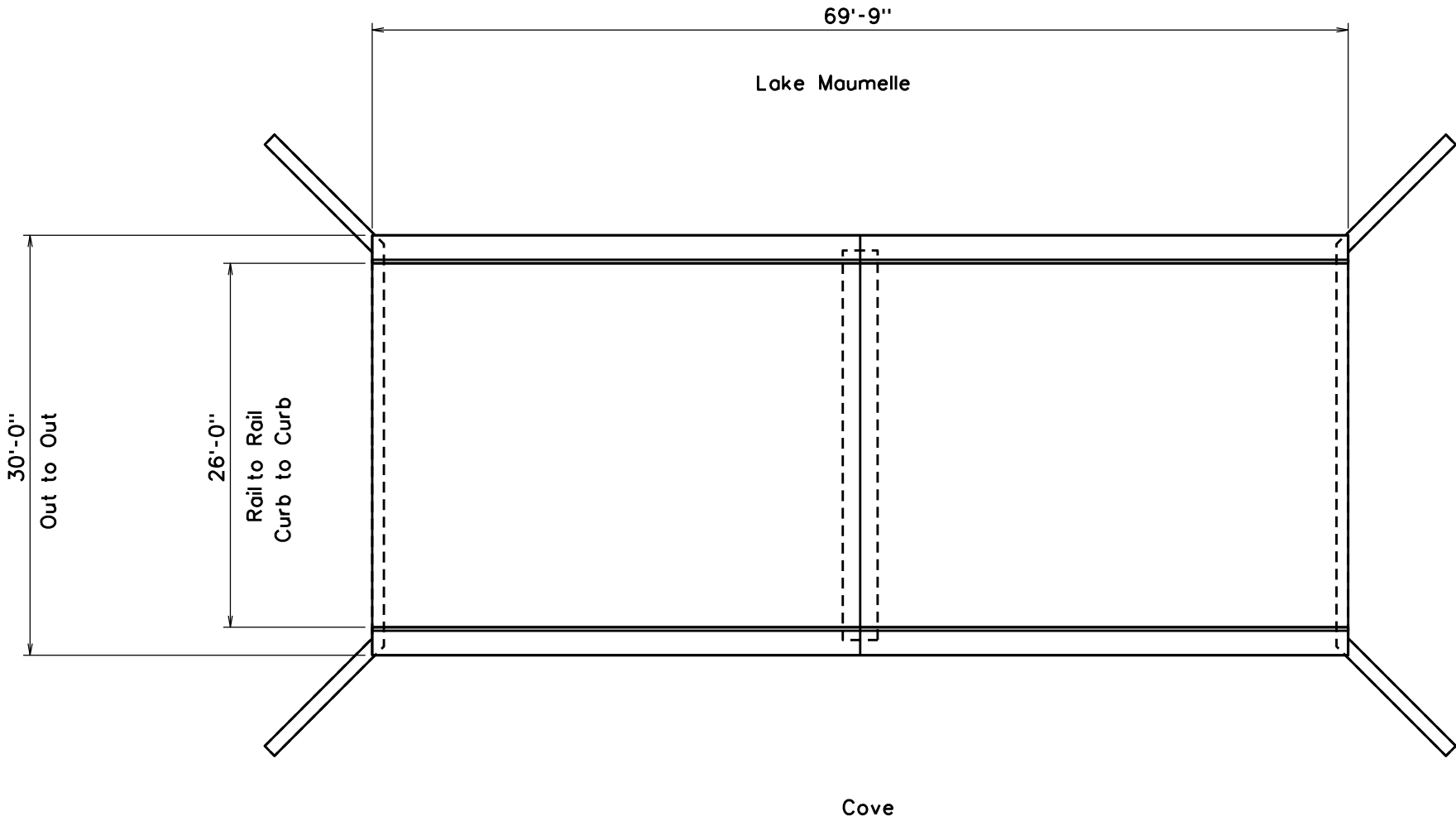
Lake Maumelle

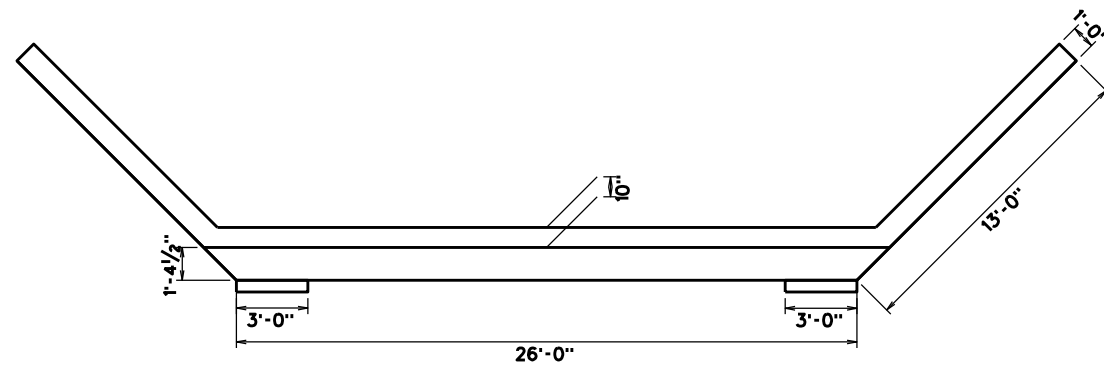
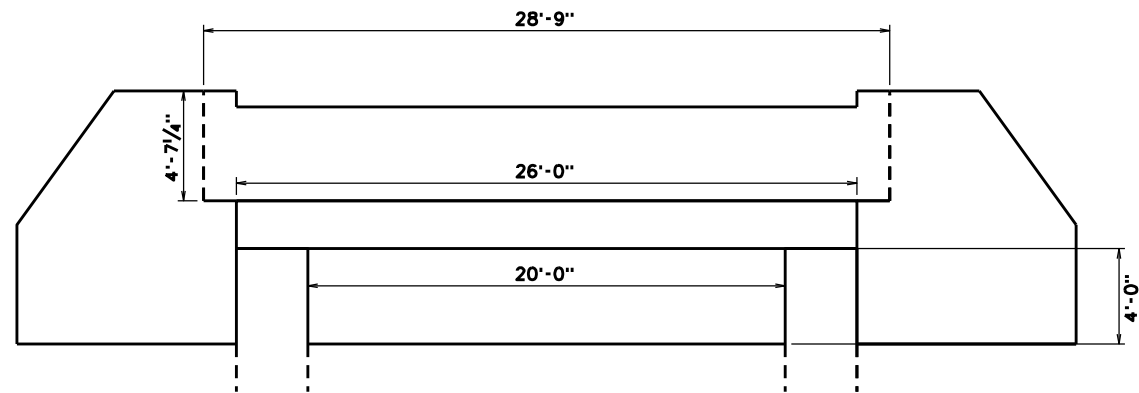
30'-0"  
Out to Out

26'-0"  
Rail to Rail  
Curb to Curb

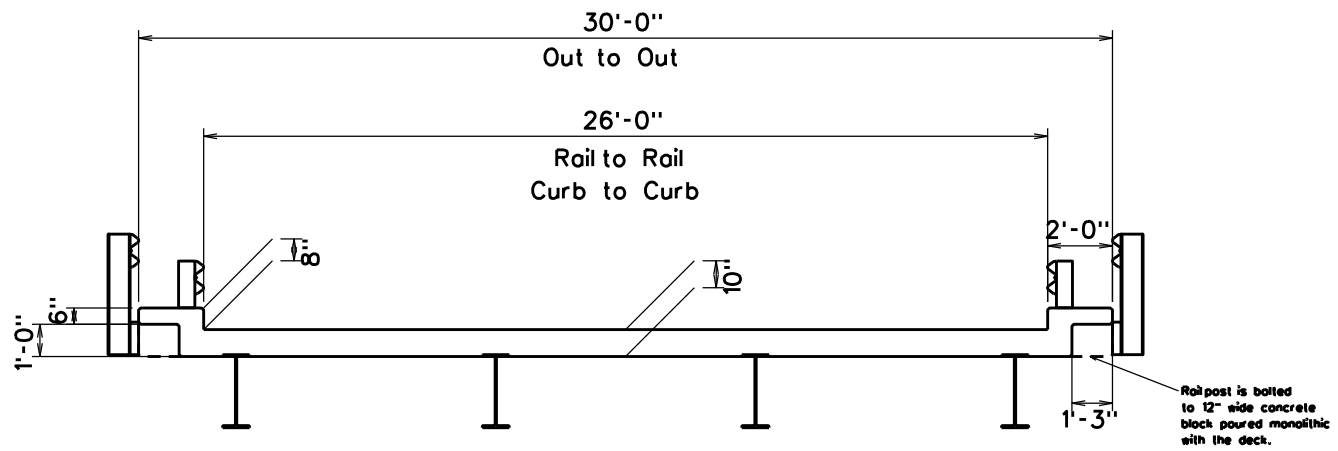
Cove

Plan View



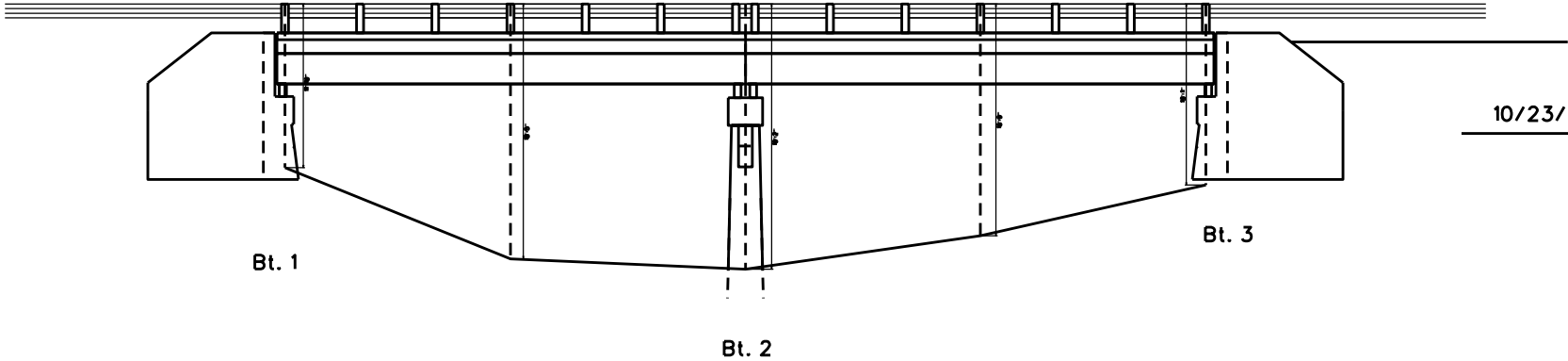


R.C. Abutments

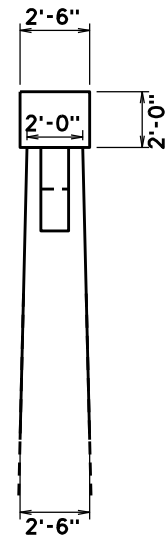
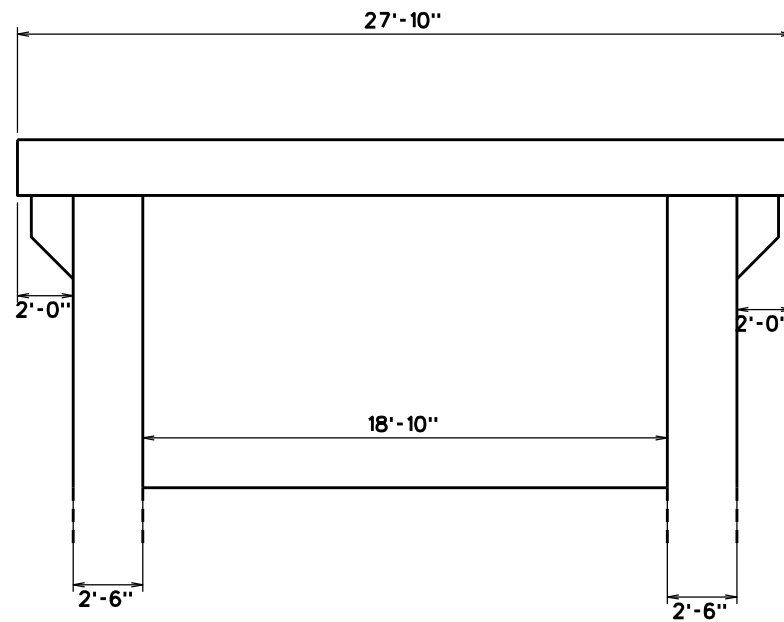


Cross Section

Channel Profile Left



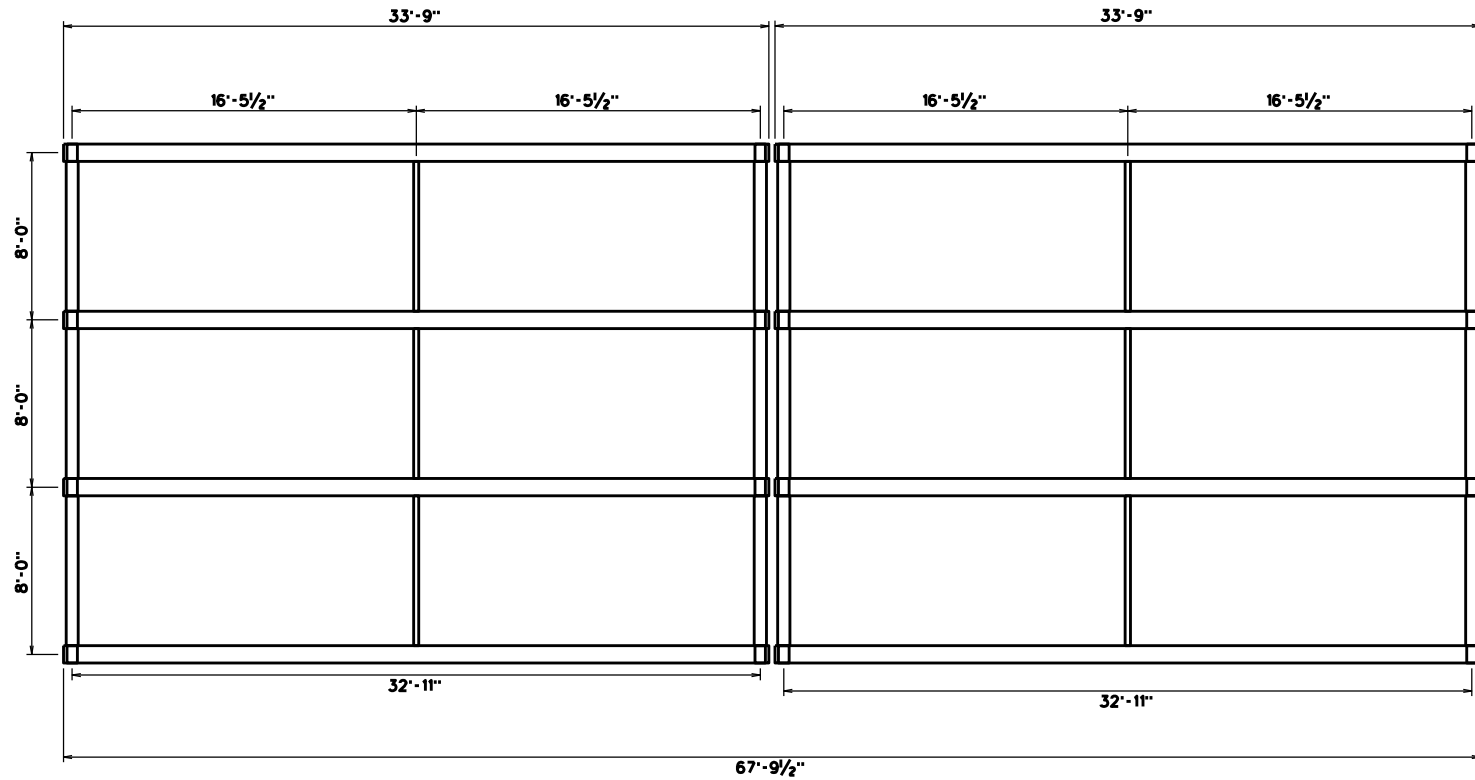




Bt. 2

R.C. Column, Cap, Pier wall.

# Framing Diagram







Beam  
Detail



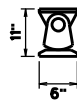
Diaphragm  
Detail  
Mid Span



Diaphragm  
Detail  
Beam End



Fixed Bearing  
Detail



Expansion Bearing  
Detail

## Channel Profile Right

